

## Basic Coverage

## Digital Video 1

*Coverage* is a cinematography term that refers to shooting a scene from a variety of camera shots, angles and distances so you will have the raw material necessary to edit the scene together into an interesting visual and emotional experience for the audience. Each shot requires a different setup. There are many different ways to plan your shots and in this lesson you will follow a basic coverage template. You will also learn, shoot and edit 7 of the most common camera shots in cinematography.

### 7 Common Types of Shots

MASTER SHOT is wide enough to include all the actors. The entire scene is shot from this one position with a stationary camera.



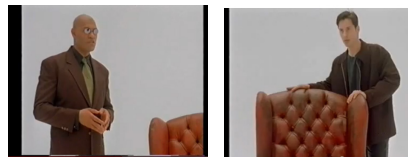
ESTABLISHING SHOT is a very wide shot that shows the locale of the scene. This shot may or may not include actors.



LONG SHOT is a wide shot that shows all of the subject/actor or room.



MEDIUM SHOT is a shot showing an actor from the waist up. This is the most common shot in filmmaking.



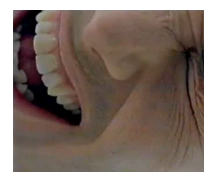
OTS- OVER THE SHOULDER SHOT is a medium or close up shot including 2 actors taken over the shoulder of one actor and showing the face of the other actor.



CLOSE-UP SHOT is a shot from the actor's neck up. Sometimes a close-up is a may include the actor's shoulders. Any image involving a single actor, or any moving object, needs to have some visual space in front of it within the frame to allow breathing room. A choke shot is a close-up that does not have breathing room. This shot creates a feeling of being trapped.



ECU – EXTREME CLOSE-UP is so close that only part of the actor's face is visible. This angle can be used very powerfully at highly emotional moments. Save the extreme close-up for such emotional moments.



**ASSIGNMENT**

**Shooting a Scene for Coverage**

**Objective:**

Obtain a variety of shots using the basic coverage template in order to have enough raw coverage to produce and edit a single scene that is visually interesting for an audience.

**Instructions:**

- Shoot a scene that is a dialogue between two people.
- Shoot the scene using each of the following shots in the listed order. You will have 9 different shots.
- Share the shot footage with everyone in your group.
- Students will edit their own scene using Adobe Premiere Pro.
- Export video, name project “firstyourname”, and airdrop to computer 23.

**BASIC COVERAGE ORDER OF SHOTS**

- ◆ MASTER SHOT
- ◆ ESTABLISHING SHOT
- ◆ LONG SHOT
- ◆ MEDIUM SHOT
- ◆ CLOSE-UP SHOT
- ◆ ECU – EXTREME CLOSE-UP
- ◆ CLOSE-UP SHOT
- ◆ MEDIUM SHOT
- ◆ LONG SHOT

**ASSESSMENT**

Edited scene Follows the Basic Coverage Template – open with Establishing shot, then long shot, then medium shot, then close-up and extreme close-up. To end the scene go to a medium shot, then a long shot. TOTAL POINTS 30

Edited scene reads as one cohesive scene. TOTAL POINTS 30

Edited scene is interesting and emotional. TOTAL POINTS 20

Edited scene includes all the required basic elements: black video at end, counting leader or black video at beginning, title and rolling credits. TOTAL POINTS 20

Describe what you liked about this project.

Describe what you did not like about this project.

TEACHER’S ASSESSMENT: \_\_\_\_\_ POINTS OUT OF a TOTAL of 100